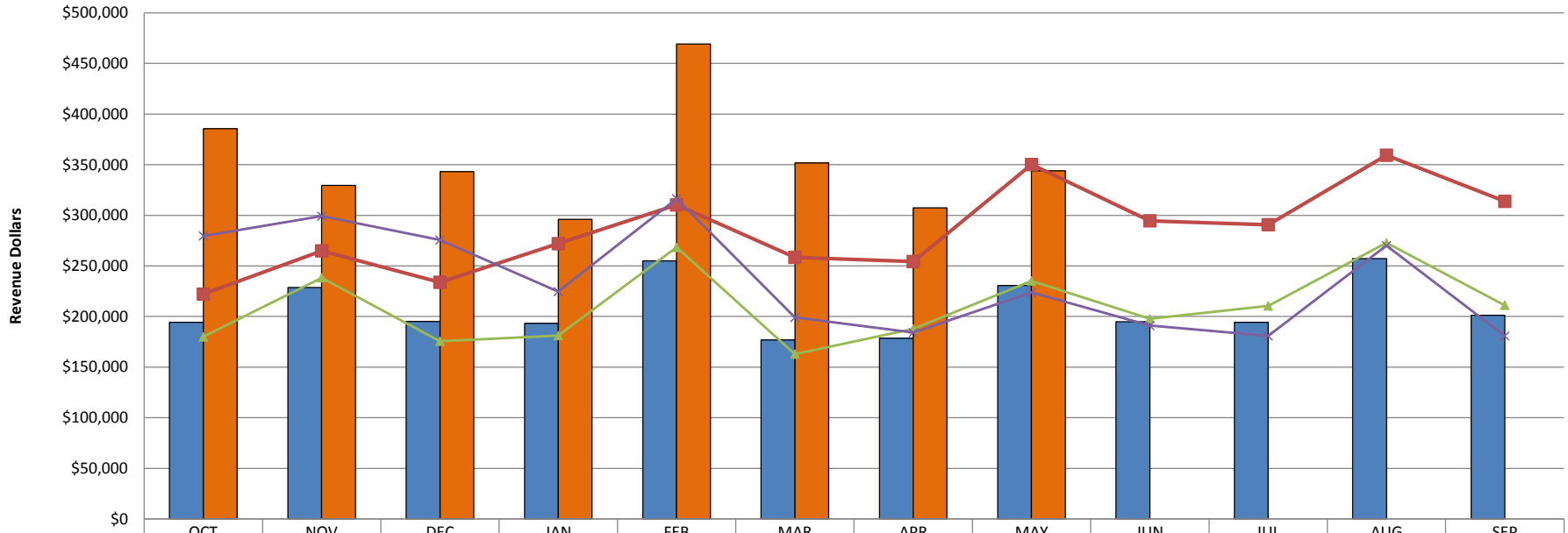


Monthly Sales Tax Revenue (1% Sales Tax + .25% Property Tax Reduction)



	OCT	NOV	DEC	JAN	FEB	MAR	APR	MAY	JUN	JUL	AUG	SEP
2011-12 Bgt	194,283	228,703	195,264	193,181	255,127	176,860	178,481	230,616	194,754	194,415	257,141	201,175
2011-12	385,668	329,685	343,187	296,071	469,266	351,723	307,354	344,022				
2010-11	222,095	264,854	233,817	271,955	310,249	258,502	254,328	350,165	294,587	290,706	359,352	313,802
2009-10	179,891	238,330	175,672	181,226	268,315	162,891	187,760	235,192	197,688	210,482	272,775	211,179
2008-09	279,610	299,168	275,549	224,549	316,489	199,081	184,073	223,705	190,975	180,872	269,992	180,795